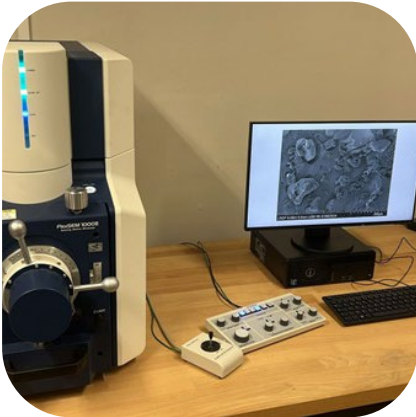




Morphological Characterization

ANALYSIS OF PARTICLE MORPHOLOGY AND DISTRIBUTION



KEY WORDS

MORPHOLOGICAL
CHARACTERIZATION,
MICROSTRUCTURAL
ANALYSIS

DESCRIPTION

The LRGP and Plasticnov offer morphology characterization and particle size distribution. Scanning electron microscopy (SEM) is used to obtain high-resolution images for examining surface characteristics, particle shape, and microstructural details. Complementary size distribution analysis allows for quantitative evaluation of particle dimensions and dispersion.

AVAILABLE TECHNIQUES AND/OR EQUIPMENT

- Scanning electron microscopy (SEM)

APPLICATIONS

- Quality control
- Analysis of polymers and particulate materials

CONTACT US

igor.clarot@univ-lorraine.fr;

frederic.fradet@univ-lorraine.fr

[Université de Lorraine](http://univ-lorraine.fr)